



Water Conservation

An Overview for Hill Country Residents



Water: Yours, Mine, and Ours



Water: Yours, Mine, and Ours

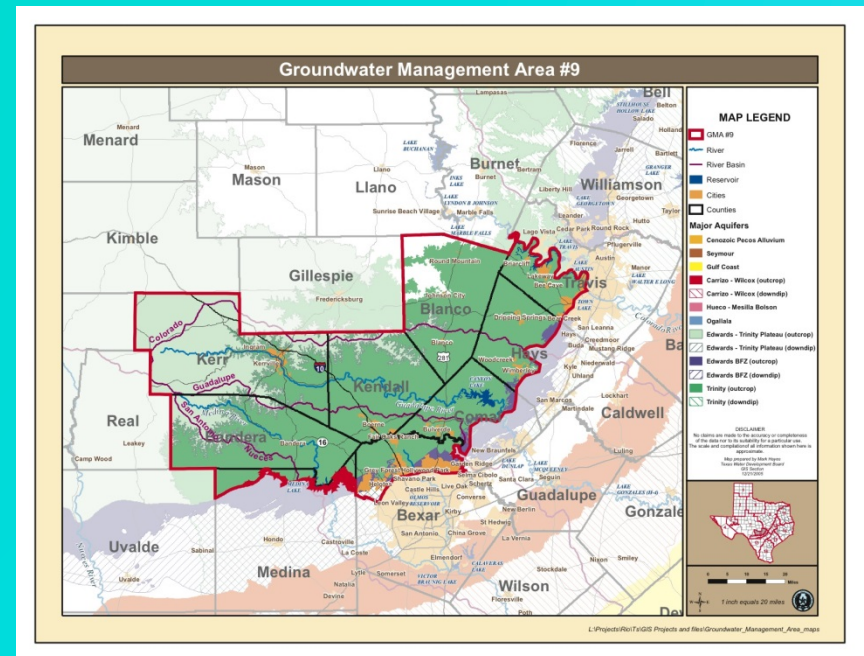
- Project Background
- Water Owner's Manual
- Video Series includes Rainwater Harvesting
- Power Point Presentations
- Literature Templates
- Public Outreach



Toward a New Water Culture

The Need for Conservation

- Kendall County is part of a “Priority Groundwater Management Area”
- Water quality and levels may decline in wells
- Creeks and springs may dry up



The New Water Culture



- People minimize impacts of water shortage on nature and our communities
- Understands where we use the most water
- Works to reduce use in these areas

Water Conservation Priority 1

Conserve Water At Home

Water Waste Culture

- It's too expensive
- It's too much of a sacrifice
- I will have to change too many habits
- I don't want to have to worry about that
- I can afford to use the amount that I do, I don't need to conserve

New Water Culture

- It requires little to no expense
- It requires no sacrifice because we use more than we need already
- We can retrofit our fixtures and not change anything else

Home Water Conservation Basics

Bathroom

Behavior Changes

- Take short showers not baths
- Reduce water level in tub
- Turn off water while shaving
- Do not use the toilet to dispose of trash



Retrofit and Repair

- Install water efficient shower heads and faucet aerators
- Test for toilet leaks
- Install high efficiency toilets
- Insulate hot water pipes

Home Water Conservation Basics

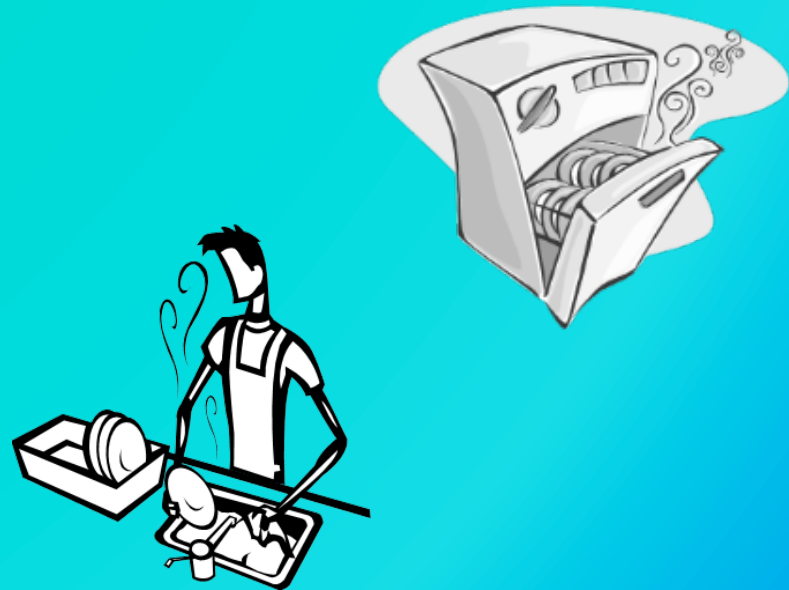
Kitchen

Behavior Changes

- Run the dishwasher only when full
- Dry scrape dishes
- Compost instead of using the garbage disposal
- Use a full sink for rinsing versus running water
- Don't thaw food with running water

Retrofit and Repair

- Install faucet aerators
- Repair leaky faucets



Home Water Conservation Basics

Laundry

Behavior Changes

- Wash full loads
- Use lowest water setting when possible
- Use cold water



Retrofit and Repair

- Purchase an Energy Star washing machine
- Use greywater



Outdoor Water Conservation

Sources of High Water Use

- High water use landscaping
 - Exotic plants
 - Green lawns
 - Over watering
- Swimming pools
- Vanity fountains



Outdoor Watering Practices

Lawn and Garden

Please Don't

- Overwater
- Carelessly use automatic sprinklers
- Clean hard surfaces with water

Please Do

- Prevent evaporation by watering in the morning and evening
- Keep pools and spas covered



Water Conscious Landscaping

- We generally use the most water for landscaping
- A good design can be lush and low maintenance
- A water conscious plan considers
 - how you will use the yard
 - Maximize non-planted areas- hardscape
 - Use native, drought tolerant plants
 - Minimize grassy areas



Water Conscious Landscaping

Simple Practices

- Set the mower on high
- Let clippings decompose
- Water less- the more you water, the more you mow
- Groundcover, planting strategies, cultivation techniques,
- Use non-traditional sources of water



Water Conscious Landscaping Mulch

- Keeps moisture in the soil
- Maintains plant health
- Inhibits weed growth
- Reduces soil temperature



Planting Tips

- Plant during cooler months
- Plant in stages
- Water more to establish plants
- Water less once plants are established



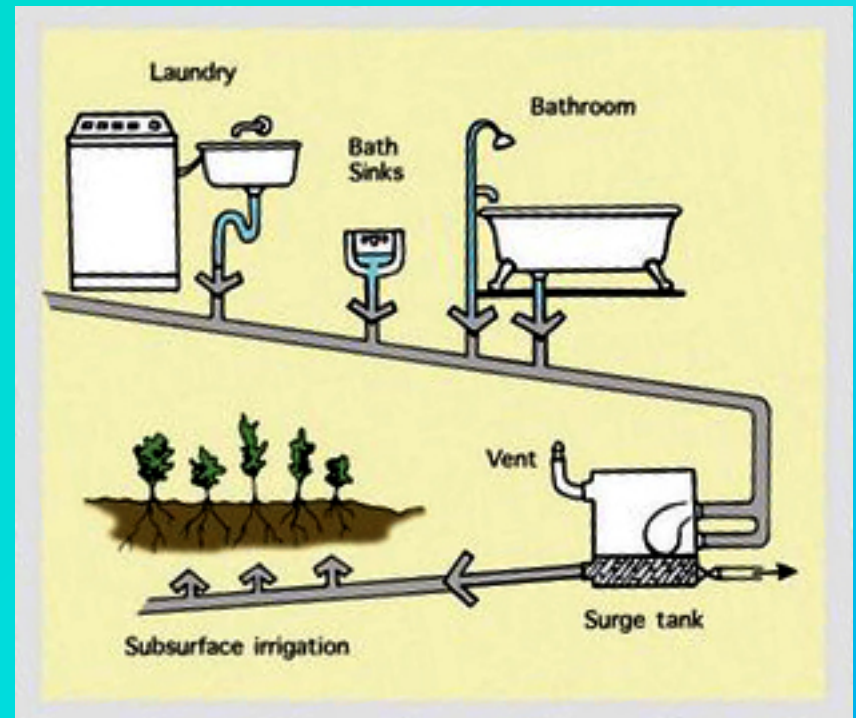
Fertilizers and Spraying

- Use organic and natural products
- Organic Fertilizers have many benefits
- To control nuisance pests and plants use natural products



Non-traditional sources of water

- • Air conditioner condensate
- • Captured rainwater
- • Grey water from sinks, showers, and washers



Grasses

- Turf grass uses lots of water
- Plant only the amount you need
- Large open spaces does not need to be a manicured lawn.
- See the Water Owners Manual for a list of recommended grasses.



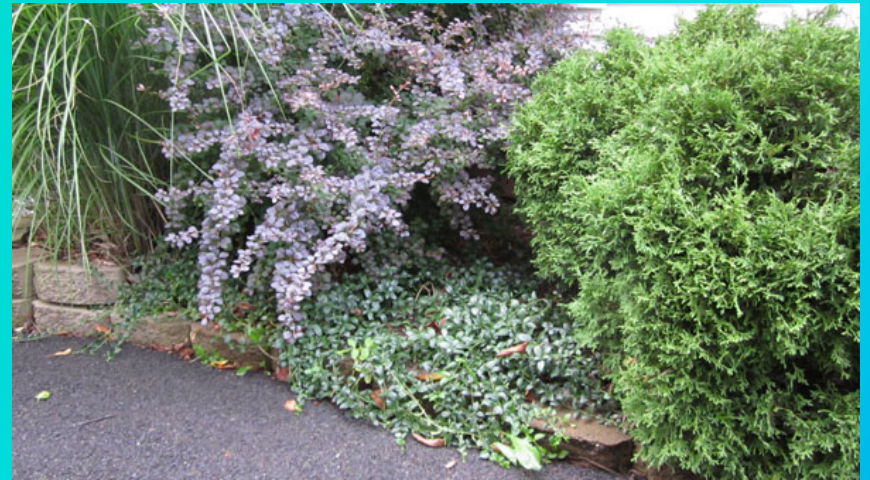
Trees



- Protect newly planted trees
- Only plant small trees under power lines
- A list of recommended trees appears in the Water Owners Manual

Vines, Groundcover, Shrubs

- Keep in mind light requirements
- Regularly water to establish the plant's root system
- Consider deer resistant plants
- Note:
 - Chemical fertilizers can produce succulent growth that is favored by deer



Annual and Perennial Flowers



- Similar to previous slide
- Be aware of light requirements
- Water to establish the root system

For More Information

- Websites
 - Cow Creek Groundwater Conservation District– www.ccgcd.org
 - Texas Water Conservation Association. Www.twca.org
 - Barton Springs Edwards Aquifer Conservation District. Www.bseacd.org
 - Edwards Aquifer Authority- Www.edwardsaquifer.org
 - Texas Water Development Board- Www.twdb.state.tx.us
 - Guadalupe Blanco River Authority- Www.gbira.org
 -
- Water Conservation Curricula
 - Guadalupe Blanco River Authority- Www.gbira.org
 - Texas Water Development Board- <http://www.twdb.state.tx.us/conservation/education/>